



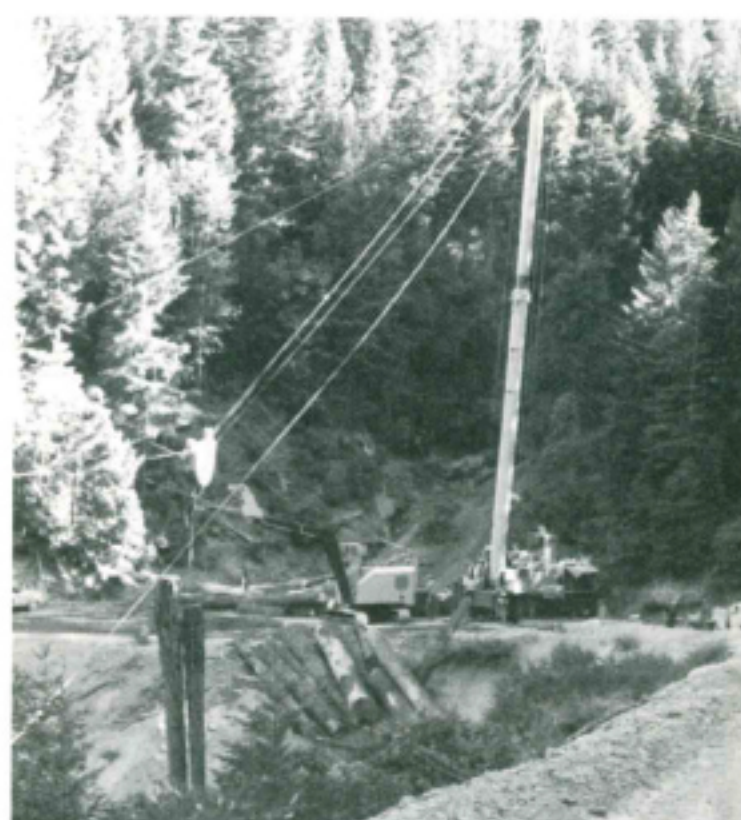
RADIO CONTROLLED CARRIAGE



Young's new Carriage is a radio controlled unit complete with a self-energizing sealed hydraulic system. Positive in its functions it is light weight and compact in size. The unit's slack puller feature gives positive feed-out of up to 300' of dropline. Ideal for all logging operations and especially suited for selective logging.

Four simple steps complete the yarding cycle:

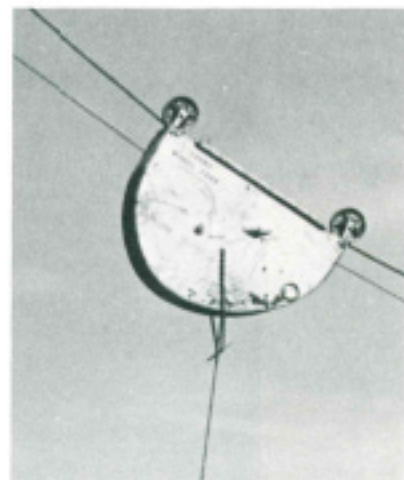
- Release Skyline Clamp, outhaul Carriages until you are over the logs.
- Lock the Skyline Clamp, continue to outhaul to play out dropline.
- Disengage outhaul and inhaul with mainline until logs reach the Carriage, release Skyline Clamp.
- Bring the turn into the landing, set your clamp — that's all there is to it!
- Carriage Brake sets and releases automatically.



MAIN OFFICE	OREGON	VANCOUVER, WASH.	INDIANAPOLIS DIVISION	CANADA
3231 Utah Avenue South P.O. Box 3522 Seattle, Washington 98124 Phone 624-1071 Area Code 206	181 Polk Street P.O. Box 2822 Eugene, Oregon 97402 Phone 686-8011 Area Code 503	2000 E. Columbia Way P.O. Box 1868 Vancouver, Washington 98661 Area Code 206 Phone 694-3313	P.O. Box 2244 50 Shelby Street Indianapolis, Indiana 46206 Phone 635-6635 Area Code 317	Young Corporation (Canada) Ltd. 15-558 Howe Street Vancouver, British Columbia Phone 688-9124 Area Code 604

FEATURES

- MAXIMUM SIDE LEAD:** Yard up to 300' on each side of skyline. Fewer moves, more logs per setting. Ideal for thinning.
- POSITIVE SKYLINE CLAMP:** "FULL ON" or "FULL OFF" with 150,000 pound grip pressure. No chance of partial clamping.
- SIMPLE CONTROLS:** Just one switch — Skyline Clamp "ON-OFF."
- POSITIVE SLACKPULLER:** Three drum design gives power run-out of drop line up to 300' for side yarding.
- LARGE DRUMS AND SHEAVES:** Saves on Skyline, Haulback, and Mainline. No reverse bends in carriage.
- FIRE SAFE:** Power is self-generating from sealed hydraulic pump. No fuel burning power source is contained in carriage, thereby eliminating chance of fire in event of skyline failure.
- FAST REMOVAL:** Carriage can be quickly removed from skyline by opening gate type clamp and pulling carrier block pins to convert to highlead. No need to thread skyline through carriage.
- LIGHTER CHOKERS:** Carriage transports logs with ends up, preventing hang-ups and allowing use of smaller chokers and dropline. Much easier on the choker setters with resultant high production thru entire shift.
- DRY BATTERY PACK:** New type dry battery good for double shift without recharging.
- CARRIAGE SPOTTING:** Stop and lock the carriage anywhere on the skyline; log up or down hill; clamp will hold any pull; and carriage works in any position.
- LIGHTWEIGHT:** Quality engineering with simplified radio and power pack design results in a carriage that is easier on your yarder and lines due to its weight, while still retaining all the wanted features of a radio carriage.
- EASY ON CABLE:** Proper design of clamp and brake with "NO-SLIP" feature prevent chafing of lines.
- FAST SERVICING:** Easy one bolt, two minute battery change and zerk fittings make for quick maintenance and minimum down time.
- BUILT BY YOUNG:** Foremost in tested and proven equipment for the industry.



SPECIFICATIONS

CARRIAGE:	
Length	84"
Width	23"
Height (Skyline to bottom of Carriage)	56½"
Weight	4690 lbs.
BATTERY (Dry type — Rechargeable)	24 Volt
RIDER BLOCK SHEAVE	16"
BEARINGS	Timken
CABLE DATA:	
Skyline	1-3/4" Maximum
Mainline	300' of 1-1/8" Maximum
Slack Puller (Haulback)	300' of 7/8" Maximum
Dropline	300' of 7/8" Maximum



COVERED BY THE FOLLOWING PATENTS
USA 3820563
CANADA 561007



WHEELER

EQUIPMENT LTD.