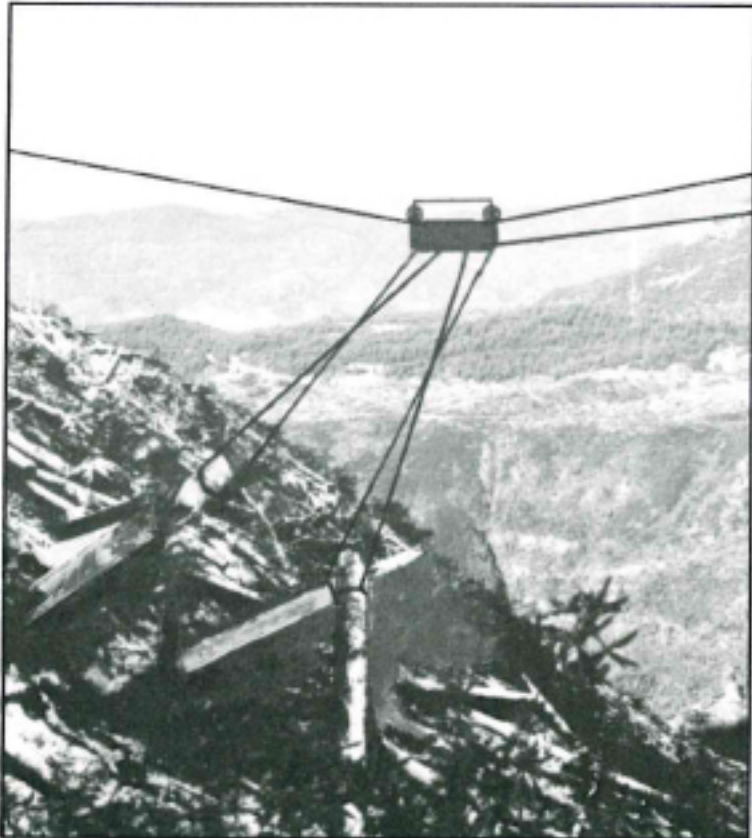
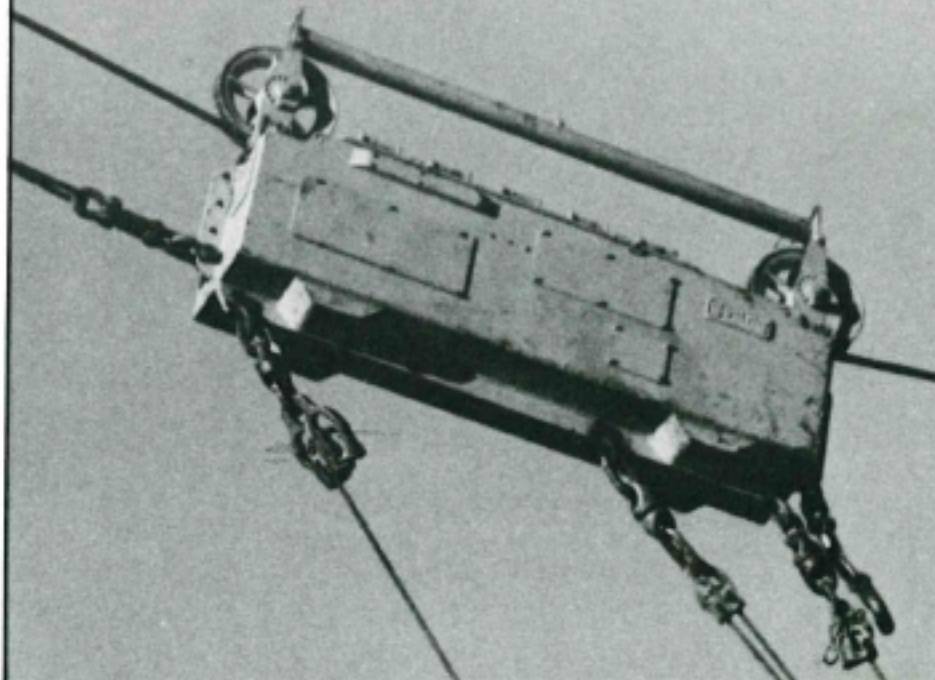


Young's Shotgun Carriage with radio controlled hydraulic clamp is the only carriage that permits shotgun logging of the far side of the ravine with a standard 2-drum or high lead yarder. With this system, you can expect a bonus of 10% to 70% more logs from every landing. The system's main feature is the hydraulic skyline clamp. A hydraulic system incorporating a sheave driven pump and accumulator powers the clamp, which is actuated by radio signal. The clamp can also be used at the tower for faster turnarounds.



For far side logging the operator simply tightens the skyline sufficiently for gravity to run the carriage out the desired distance. The carriage is then clamped to the skyline via radio signal. The skyline is sagged to set the chokers without the carriage settling to the belly of the line. The carriage operates as a standard shotgun system when the clamp isn't used.

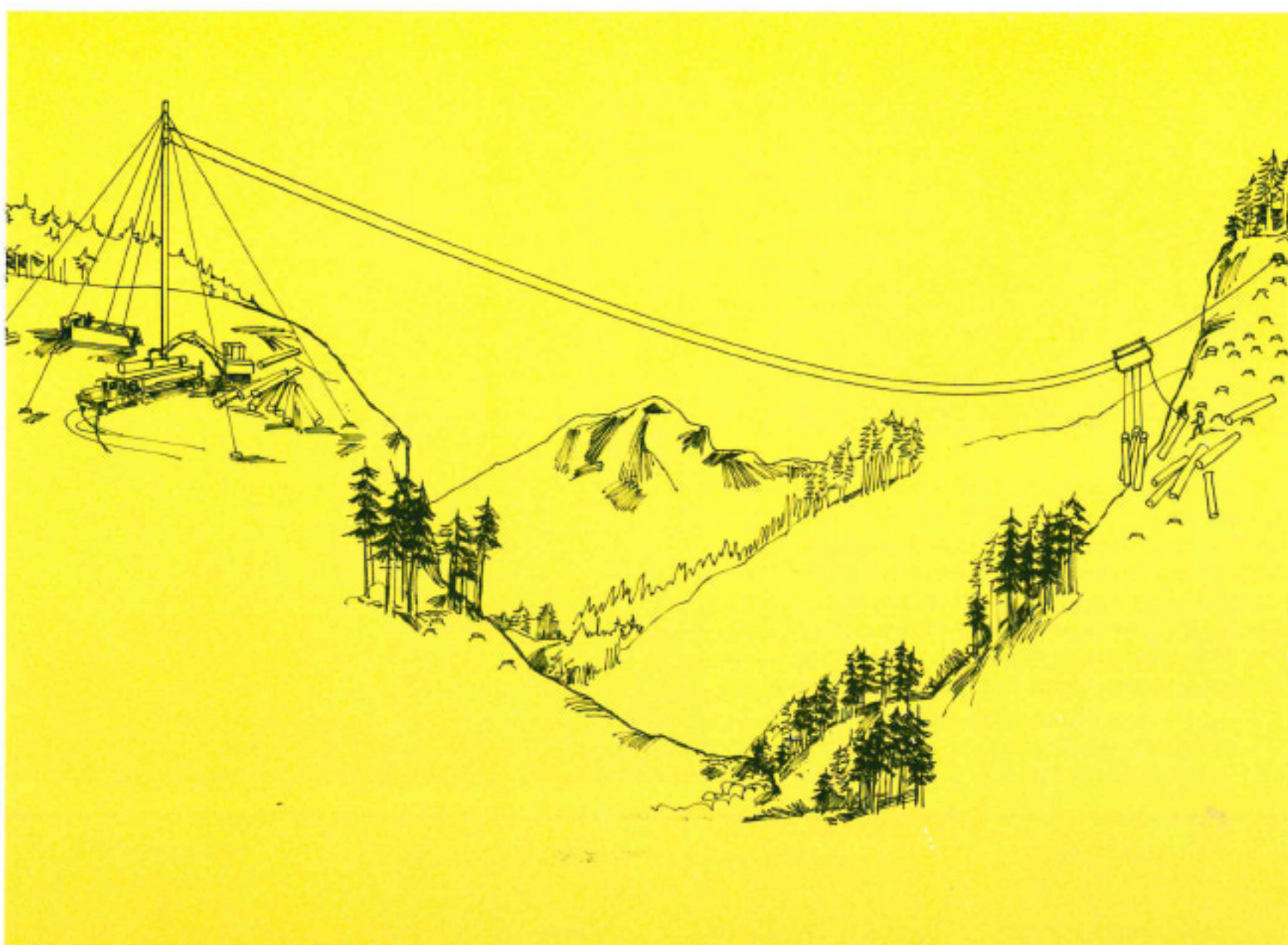
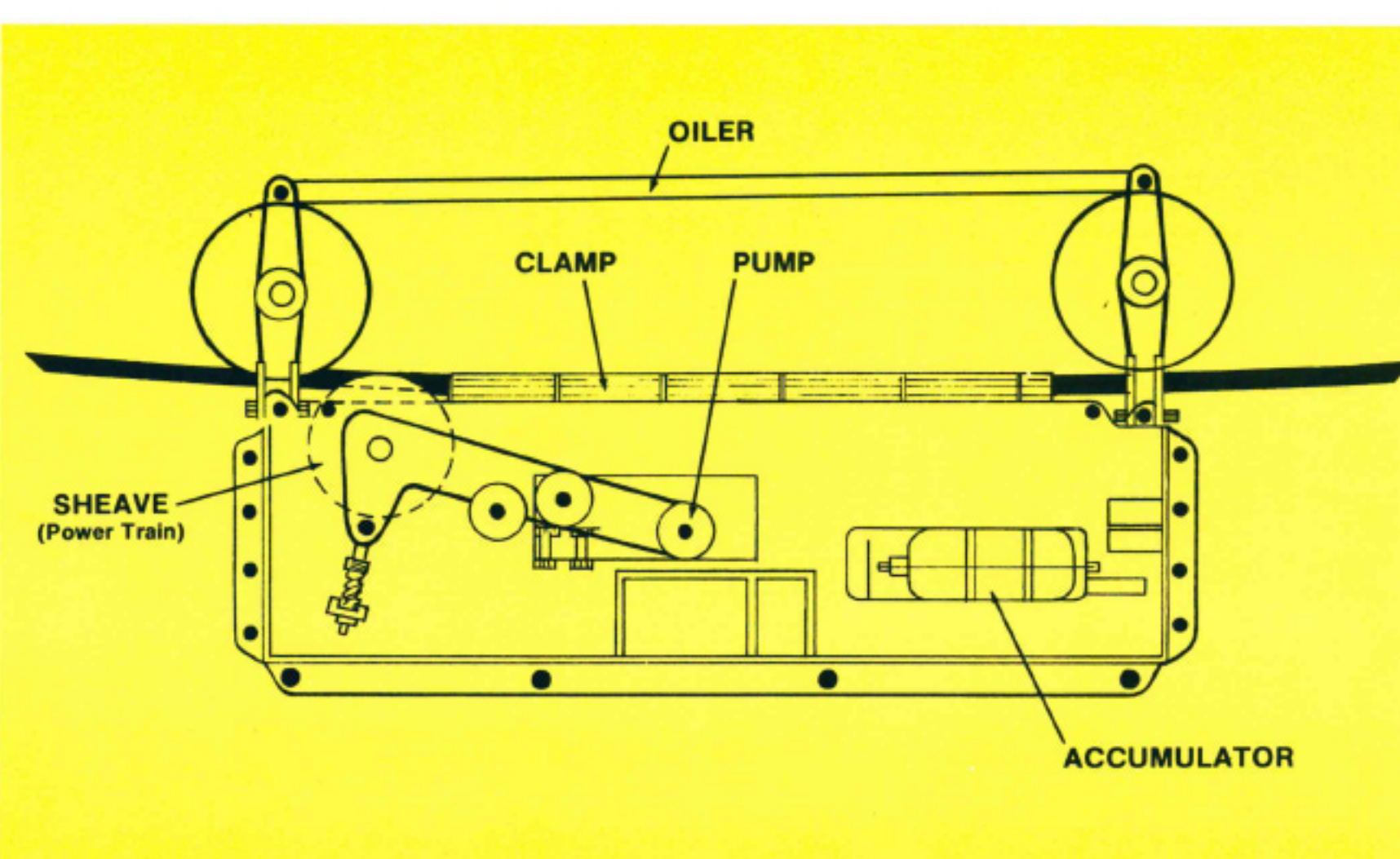


MAIN OFFICE
3231 Utah Avenue South
P.O. Box 3522
Seattle, Washington 98124
Phone 624-1071
Area Code 206

OREGON
181 Polk Street
P.O. Box 2822
Eugene, Oregon 97402
Phone 686-8011
Area Code 503

VANCOUVER, WASH.
2000 E Columbia Way
P.O. Box 1868
Vancouver, Washington 98661
Phone 694-3313
Area Code 206

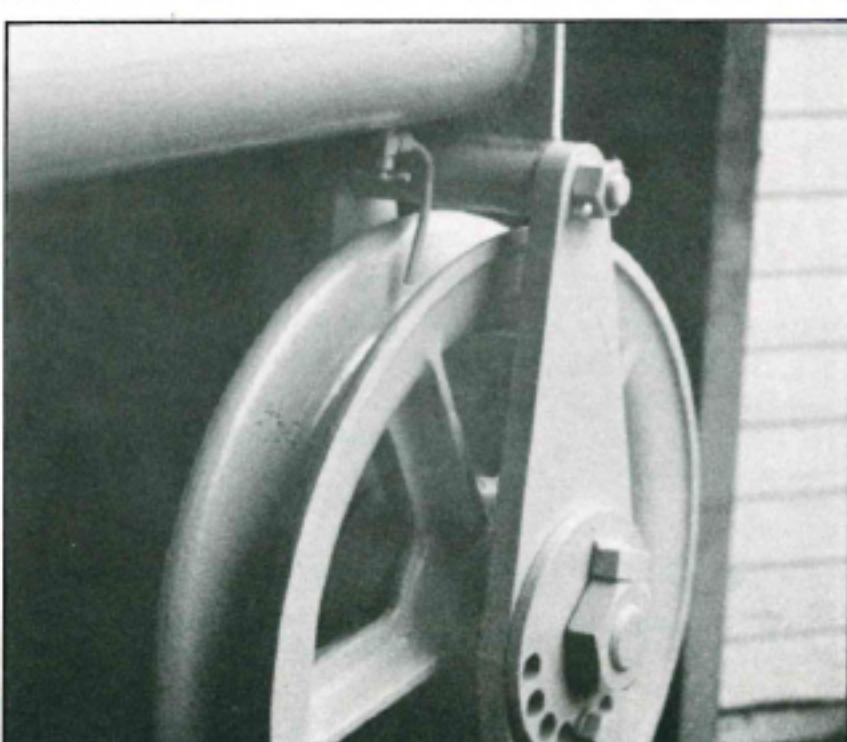
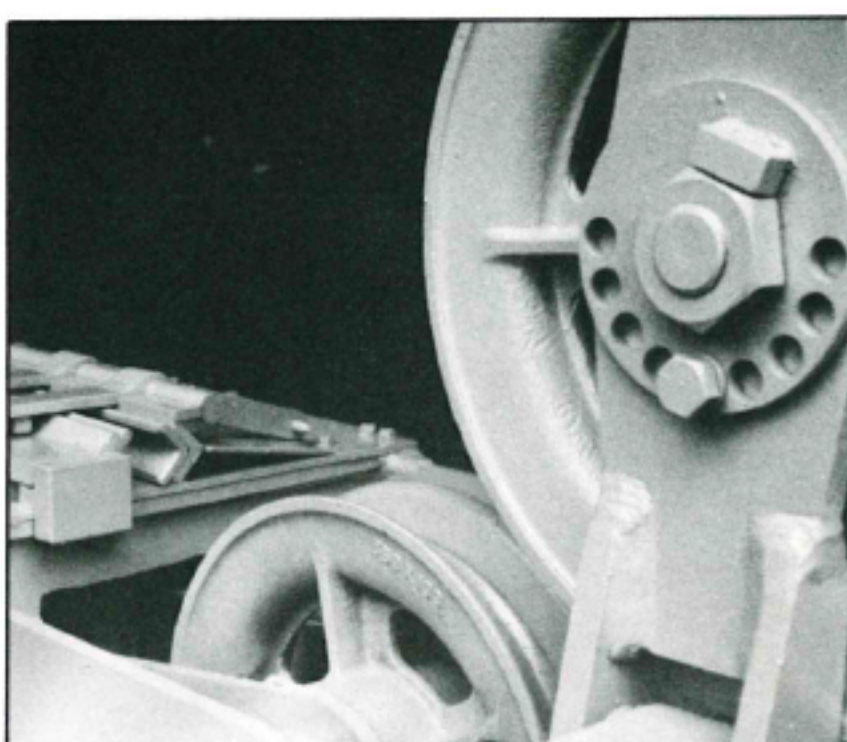
SINGAPORE
22A Shelford Road
P.O. Box 3
Farrer Road Post Office
Singapore
Phone 668-825



FEATURES

- Shotgun carriage with hydraulic skyline clamp logs everything from tower to tailhold.
- Designed for 2-drum yarders: Costs less to set up, carriage costs less, fewer lines needed.
- Flies 4 to 6 chokers.
- Gets all available logs with fewer landings.
- Use as Shotgun with clamp — or straight Shotgun by shutting off hydraulic system.
- Simple radio has only ON-OFF switch. Operates on 24V rechargeable Gell Cell battery.
- Big 20" sheave reduces skyline wear.
- Special oiler further reduces skyline wear.
- Self-charging hydraulic system.
- Rechargeable at landing with special *Power Pack.

*accessory



SPECIFICATIONS

LENGTH 107"
HEIGHT 63"
WIDTH 22"
WEIGHT 3600 Pounds

RIDER BLOCKS:

Sheaves 20" W/Vertical Adjustment
Line Size 1-1/8" — 1-5/8"
Bearings Timken

RADIO SYSTEM:

Manufacturer Challenger Electronics,
Portland, Oregon
Voltage 24
Battery Rechargeable Gell Cell

HYDRAULIC SYSTEM:

Operating Pressure 1500 - 2500 PSI
Fluid Capacity 10 Gallons
Relief Valve Setting 2500 PSI
Hydraulic Pump Vickers Variable
Displacement Piston Pump
Accumulator Greer, 1500 PSI
— 2-1/2 Gal. Capacity

POWER TRAIN:

FORMSPRAG Overrunning Clutch