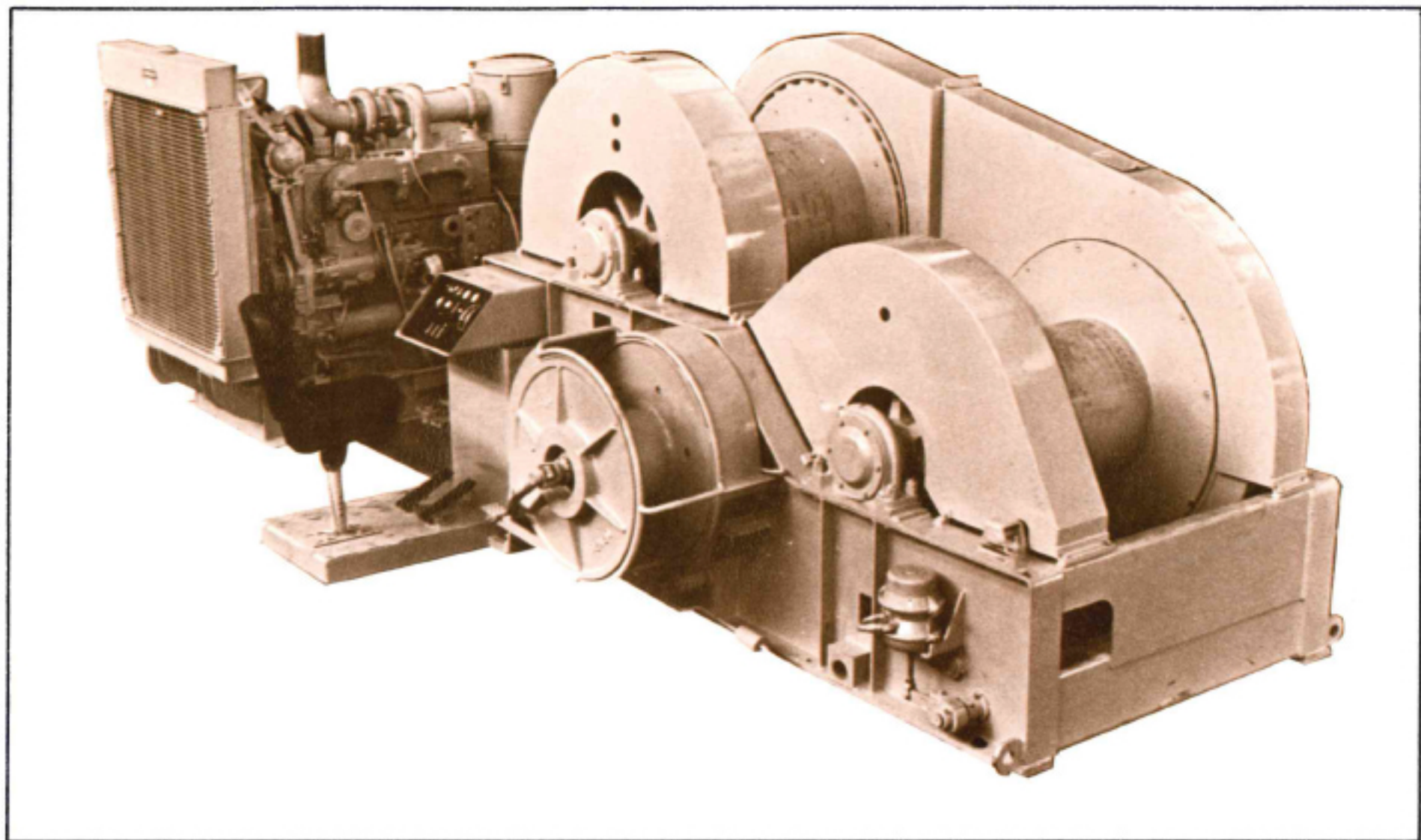




# WASHINGTON

## MODEL 227 YARDER\*



### UNIQUE CHARACTERISTICS

- HIGH LINE PULLS FOR LARGE TREE LENGTH LOGS
- HIGH LINE SPEEDS FOR MEDIUM TO SMALL LOGS
- MAIN DRUM DESIGNED FOR SKYLINE USE
- MAIN BRAKE DESIGNED FOR SKYLINE USE
- HAULBACK DRUM DESIGNED FOR GRAVITY SYSTEM PULLS & SPEEDS
- ALL DRUMS, SHAFTS, BEARINGS, BRAKES AND CLUTCHES DESIGNED FOR UP TO 500 H.P.
- MINIMUM WEIGHT FOR SIZE
- ALL COMPONENTS EASILY REPLACEABLE
- COMPACT CUBIC MEASUREMENTS
- ALL PARTS STANDARD MANUFACTURE

\*(WITH CUMMINS NT-855-P 335 HP ENGINE)

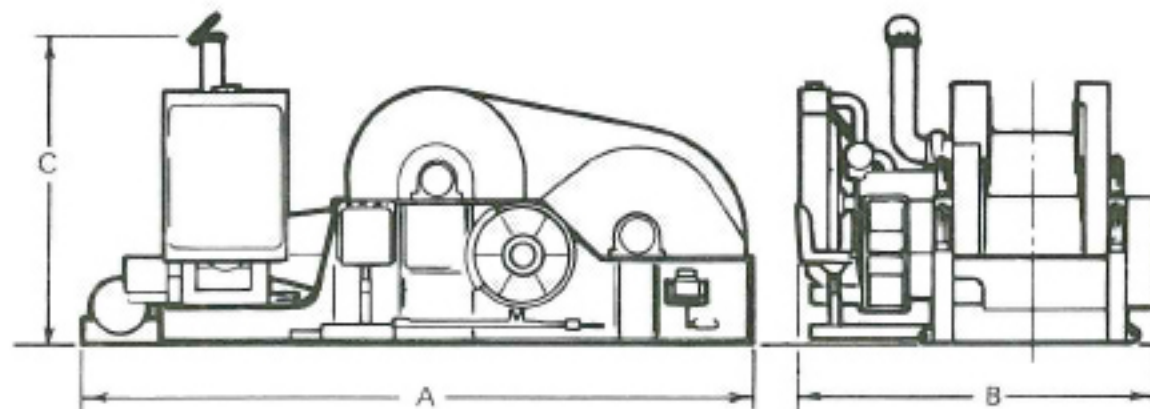
### DESIGN FEATURES

- POWER UNIT — 335 HP
- POWER SHIFT TRANSMISSIONS
- TORQUE CONVERTER
- MULTI-STRAND CHAIN DRIVE
- AIR ACTIVATED DRY TYPE PLATE CLUTCHES ON DRIVE SHAFT
- RUGGED WELDED FRAME
- SUB BASE MOUNTED POWER UNIT FOR EFFICIENT USE OF SPACE ON SLED OR TOWER
- STRAW DRUM ACCESSIBLE TO OPERATOR
- ANY SHAFT ASSEMBLY REMOVABLE WITHOUT DISTURBING ANOTHER ASSEMBLY
- HEAVY GUARDS ON DRUMS FOR SAFETY AND LINE LIFE
- HEAVY DUTY WIDE DIAMETER BRAKES FOR SIMPLICITY AND LONG LIFE
- AIR CONTROLS ON MAIN AND HAULBACK, MANUAL STRAW

### ■ MODEL 227 YARDER...SPECIFICATIONS

#### DIMENSIONS

A	Length	18' 0-3/8"
B	Width	9' 11"
C	Height	8' 5-11/16"



#### LINE SPEEDS AND PULLS

DRUM	SIZE	CAPACITY	GEAR	DRUM EMPTY PULL @ FPM		DRUM HALF FULL PULL @ FPM		DRUM FULL PULL @ FPM	
MAIN	Flange 48" Spool 24" Spool Length 34"	1,650' - 1-3/8"	1	169,000	123	118,000	175	98,000	217
			2	84,500	246	59,000	350	48,000	434
			3	60,500	343	42,300	490	34,400	605
			4	42,300	492	29,500	700	24,000	868
			5	30,300	685	21,000	990	17,200	1210
HAULBACK	Flange 48" Spool 30" Spool Length 30"	3,400' - 7/8"	1	64,400	334	49,000	422	42,000	495
			2	32,200	668	24,500	844	21,000	990
			3	22,300	935	17,500	1190	15,000	1390
			4	16,100	1336	12,750	1688	10,500	1980
			5	11,200	1850	8,750	2380	7,500	2760
STRAW	Flange 33" Spool 14" Spool Length 13"	5,400' - 3/8" 3,900' - 7/16"	1	21,500	435	12,000	780	9,350	990
			2	21,500	870	12,000	1560	9,350	1980
			3	17,700	1220	9,550	2180	7,450	2780
			4	11,960	1740	6,670	3020	5,250	3960
			5	8,550	2420	4,800	4300	3,720	5500

#### COMPONENT DATA

##### POWER UNIT (CUMMINS NT-855-P)

HORSEPOWER	335
GOVERNED RPM	2100
NUMBER OF CYLINDERS	6
BORE AND STROKE - IN.	5 1/2 x 6
PISTON DISPLACEMENT - CU. IN.	855
OPERATING CYCLES	4
CRANKCASE OIL CAPACITY - GALS.	7
COOLANT CAPACITY - GALS.	19
NET WEIGHT WITH STANDARD ACCESSORIES (LBS.)	3275

##### CONVERTER TRANSMISSION

TWIN DISC CONVERTER WITH 5 SPEED, SINGLE STAGE CONVERTER - 8FW-1605, 5-SPEED TRANSMISSION PLUS REVERSE - TAC 51-1304.

##### DRUMS

MAIN AND HAULBACK DRUMS PRESSED TIGHT ON SHAFTS, TURN IN SELF ALIGNING HOUSED BEARINGS, BOLTED TO FRAME. BULL GEARS BOLTED TO DRUM ELIMINATING CONE FRICTIONS, SPRING CAGES AND KEYS & COLLARS. BULL GEARS DRIVEN BY PINIONS INTEGRAL WITH DRIVE SHAFT CLUTCHES.

##### BRAKES & CLUTCHES

HAULBACK & MAIN DRUMS EQUIPPED WITH 48 1/4" x 8" WIDE BAND BRAKE (AIR OPERATED) WITH PROVISION FOR ADDITIONAL 48 1/4" x 5" WIDE BRAKE BAND ON HAULBACK DRUM. CLUTCHES ARE AIR OPERATED, DISC TYPE.

##### CONTROLS

AIR THROUGHOUT WITH EXCEPTION OF THE STRAW DRUM BRAKE. CONTROLS MAY BE RAISED OR LOWERED WITH VIEW OF DRUMS FROM CONTROL STATION.

##### FRAME

WELDED STEEL WITH ACCESS TO INTERIOR PROVIDED.

##### GUARDS

COMPLETE BELLY, GEAR & BRAKE GUARDS.

##### WEIGHT

WITH CUMMINS 335 HP - 30,800 LBS.

ALL SPECIFICATIONS SUBJECT TO CHANGE



# WHEELER

## EQUIPMENT LTD.