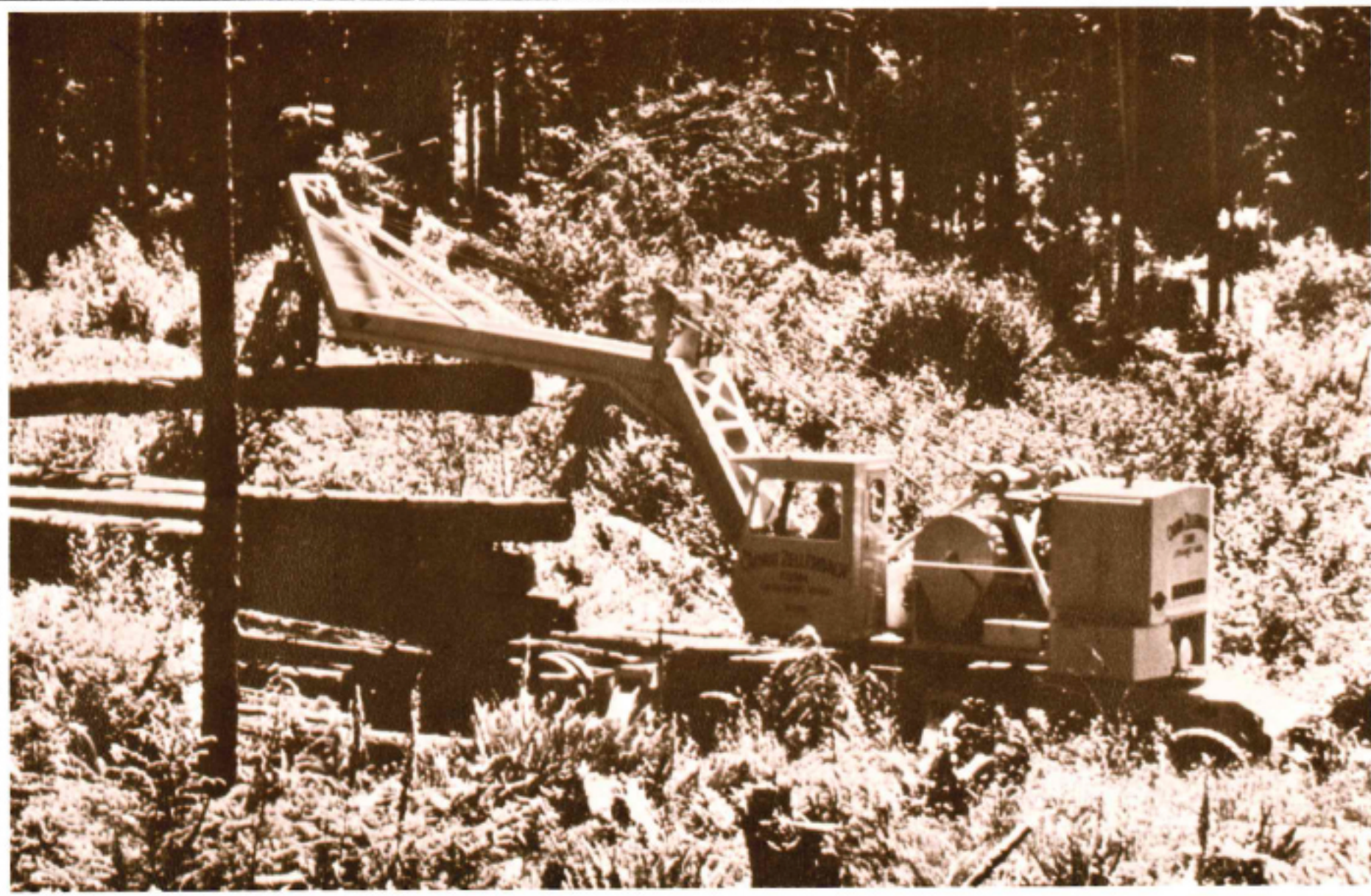




WASHINGTON

MODEL TL-5C TRAKLOADER



UNIQUE CHARACTERISTICS

- SINGLE POWER PLANT FOR MACHINERY DECK AND TRAVEL
- CAN TRAVEL PERMIT—LEGAL FULLY EQUIPPED
- ALLOWS COMBINATION YARDING — LOADING
- THREE SPEED POWER SHIFT TRANSMISSION:
 - THREE SPEED TRAVEL — FORWARD & REVERSE
 - THREE SPEEDS FORWARD & REVERSE—ALL DRUMS
 - POWER LOAD LOWERING ON ALL DRUMS

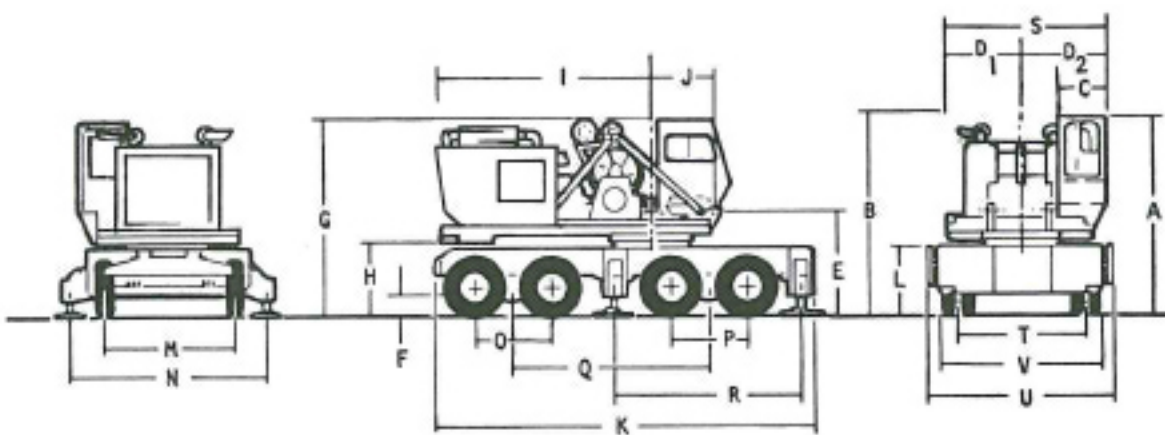
DESIGN FEATURES

- IN-LINE ENGINE ELIMINATES CHAIN DRIVE
- INDEPENDENT BOOM HOIST
 - POWER UP, POWER DOWN
 - AUTOMATIC BRAKE
- INDEPENDENT SWING
 - INFINITE HYDRAULIC POWER
- AIR ACTIVATED PLATE DRUM CLUTCHES
- GEAR TRAIN RUNS IN OIL BATH
- ALL CONTROLS IN OPERATOR'S CAB FOR MACHINERY DECK & CARRIER

■ MODEL TL-5C TRAKLOADER...SPECIFICATIONS

DIMENSIONS

A	Height over operator's cab	12' 6 3/4"
B	Max. height to machinery house	11' 4 1/2"
C	Width of operator's cab	3' 6 1/2"
D	Width from center	4' 7 1/2"
E	Width from center	5' 3"
F	Boom pin to ground	9' 5 3/4"
G	Minimum ground clearance	12 1/2"
H	Max. height over "A" frame	12' 8"
I	Minimum swing clearance	4' 8"
J	Following	12' 9 1/2"
K	Center of rotation to boom pin	4' 6"
L	Overall carrier length	24' 2 1/2"
M	Carrier height without turntable	4' 4 1/4"
N	Track of steering wheels	95-173"
O	Center to center of retractable outriggers	14' 0"
P	Centers of front tandem wheels	4' 6"
Q	Centers of rear tandem wheels	4' 6"
R	Wheel base	13' 6"
S	Ctr. to Ctr. length of outriggers	12' 3"
T	Machinery house max. width	9' 10 1/2"
U	Rear tandem track	80"
V	Maximum width, retracted retractable outriggers	11' 0 1/4"
W	Width over outside tires	104-178"



LINE SPEEDS AND PULLS

DRUM	CAPACITY	GEAR	LINE PULL BARE	LINE PULL FULL	LINE SPEED BARE	LINE SPEED FULL
Closing Drum	260' of 7/8"	1	50,700 lbs.	34,500 lbs.	208 ft/min	297 ft/min
	350' of 3/4"	2	27,300 lbs.	19,050 lbs.	392 ft/min	561 ft/min
	500' of 5/8"	3	13,300 lbs.	9,300 lbs.	805 ft/min	1,149 ft/min
Holding Drum	260' of 7/8"	1	16,900 lbs.	11,800 lbs.	208 ft/min	297 ft/min
	350' of 3/4"	2	16,900 lbs.	11,800 lbs.	392 ft/min	561 ft/min
	500' of 5/8"	3	13,300 lbs.	9,300 lbs.	805 ft/min	1,149 ft/min
Tag Drum	200' of 1/2"	1	4,375 lbs.	3,040 lbs.	374 ft/min	583 ft/min
		2	4,375 lbs.	3,040 lbs.	715 ft/min	1,115 ft/min
		3	4,375 lbs.	3,040 lbs.	1,460 ft/min	2,280 ft/min
Boom Hoist Drum	195' of 9/16"		11,000 lbs.	6,200 lbs.	75 ft/min	133 ft/min

LIFTING CAPACITIES



(With 8,000 Lb. Counterweight)

RADIUS	OVER REAR WITH 14'-9" OUTRIGGERS	OVER SIDES WITH 14'-9" OUTRIGGERS	OVER SIDES WITHOUT OUTRIGGERS	OVERSIDES WITHOUT OUTRIGGERS
12	70,000	50,000	54,100	50,000
15	70,000	50,000	37,800	35,000
20	70,000	45,600	24,900	23,200
25	48,200	31,800	17,800	16,700
30	34,700	24,200	13,900	13,000

All Ratings at 100% of Tipping (Based on 28'-Heel Type Boom)

COMPONENT DATA

POWER UNIT

CUMMINS V555-P200 200 H.P. @ 2800 RPM

CONVERTER TRANSMISSION

3 SPEEDS FORWARD & REVERSE THRU CLARK HR28318 CONVERTER & TRANSMISSION.

DRUMS

HOLDING AND CLOSING DRUMS	TAG DRUM
FLANGE DIA. 24"	FLANGE DIA. 16"
SPOOL DIA. 16"	SPOOL DIA. 10"
SPOOL LENGTH 9 1/2"	SPOOL LENGTH 5"

CARRIER

TURNING RADIUS 36FT.
TRAVEL SPEED: LOW RANGE — 0 TO 6 MPH
HIGH RANGE — 0 TO 25MPH
GRADABILITY (AT STALL) LOW RANGE — 30%
HIGH RANGE — 10%

STEERING AXLES — SCHULER POWER STEERING AXLES, DRIVE AXLES — CLARK MODEL BD-45-60 PLANETARY DRIVE WITH SPRING-LOADED, AIR RELEASED BRAKES, HYDRAULIC OUTRIGGERS. TIRES 11.00 x 20.

BRAKES AND CLUTCHES

DRUMS EQUIPPED WITH AIR ACTIVATED CLUTCHES. BRAKES ARE AIR RELEASED, SPRING APPLIED EXTERNAL CONTRACTING BAND TYPE.

SWING

HYDRAULIC POWERED, EQUIPPED WITH AIR RELEASED. SPRING APPLIED BRAKE. SPEED FROM 0 TO 5.2 RPM

BOOM

28' LOADING GOOSENECK HEEL BOOM.

WEIGHTS

BOOM	7,000 LBS.
"A" FRAME	1,250
MACHINERY DECK	23,100
COUNTERWEIGHT	8,000
CARRIER	26,650

TOTAL 66,000 LBS.

WEIGHT OF LINES, ETC. 2,700

WORKING WEIGHT 68,700 LBS.

WEIGHT DISTRIBUTION WITH COUNTERWEIGHT REMOVED
FRONT 20,000 LBS.
REAR 40,700 LBS.

ALL SPECIFICATIONS SUBJECT TO CHANGE



WHEELER

EQUIPMENT LTD.