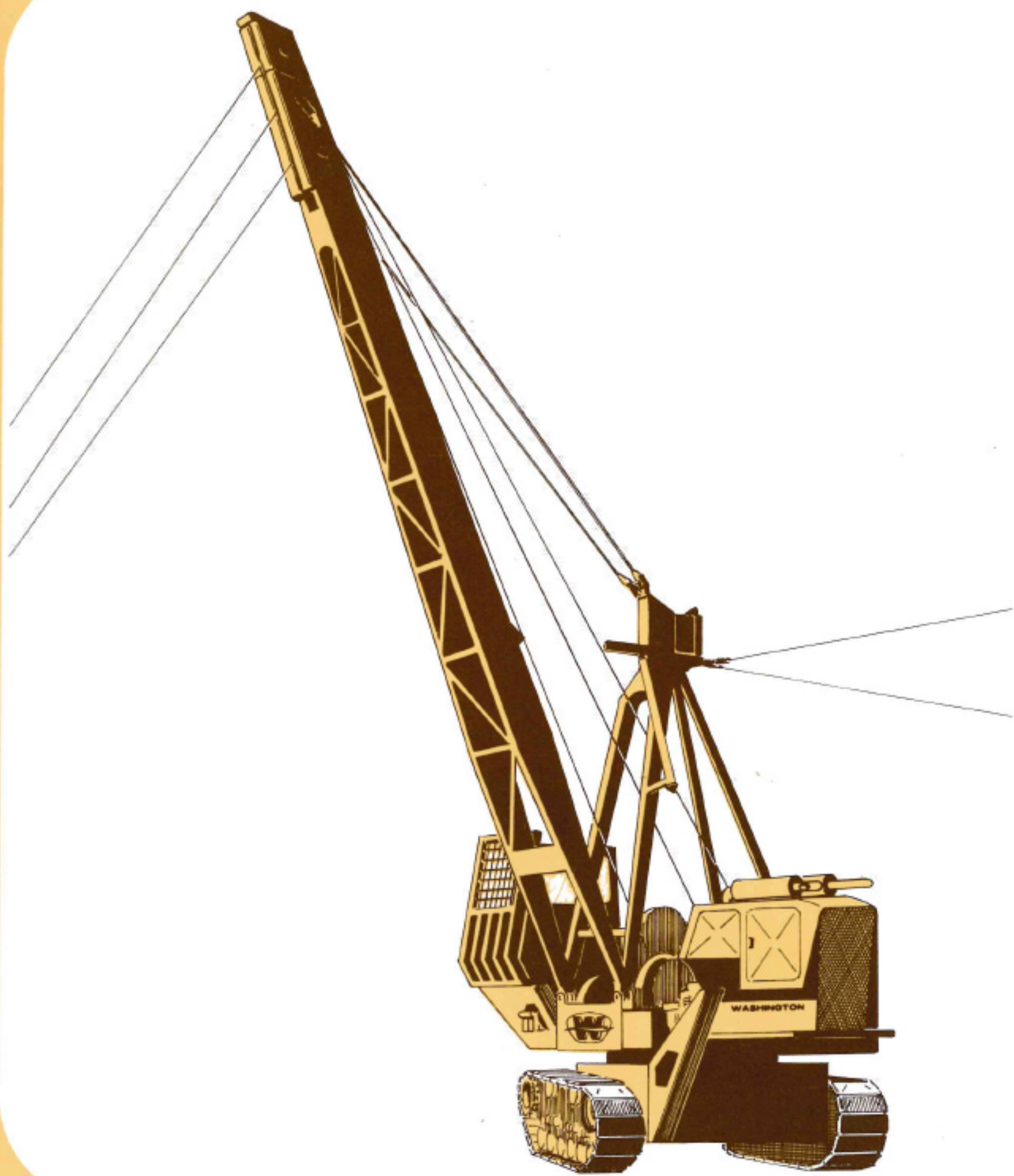


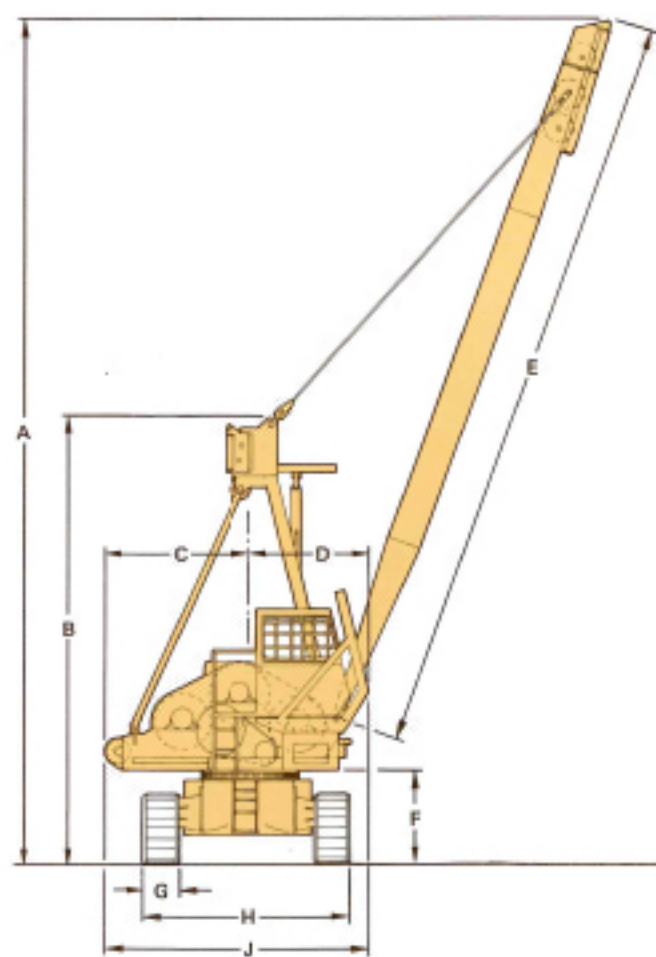
SKYLOK YARDER

MODEL 78

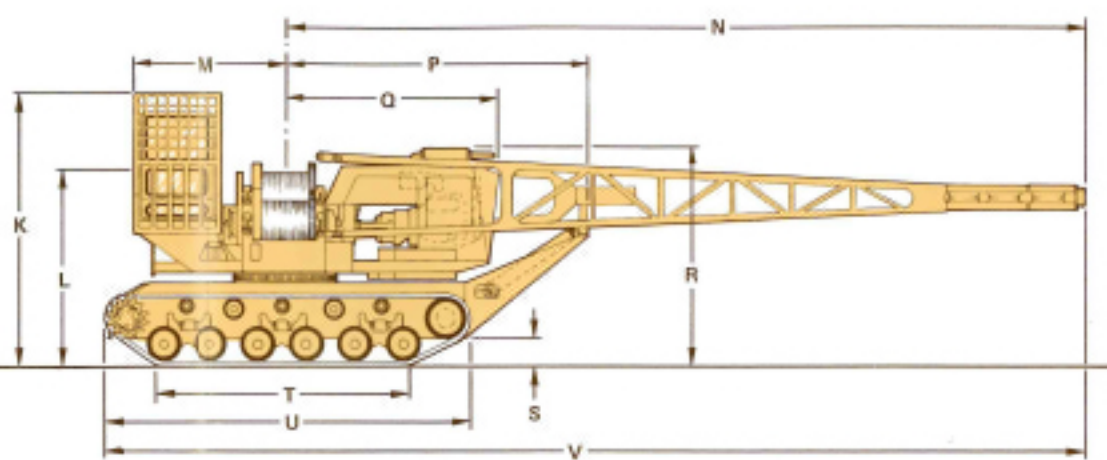


WASHINGTON

MODEL 78 SKYLOCK YARDER . . . SPECIFICATIONS



DIMENSIONS					
A	MAXIMUM HEIGHT OVER TOP OF HAULBACK SHEAVE	44' 8"	L	HEIGHT TO SPLIT OPERATORS CAB	10' 11-1/2"
B	MAXIMUM HEIGHT OVER TOP OF "A" FRAME	24' 2-1/8"	M	WIDTH FROM CENTER	8' 4-1/2"
C	MINIMUM SWING RADIUS	7' 7-1/4"	N	MAXIMUM LENGTH FROM CENTER (WITH BOOM LOWERED)	43' 3"
D	WIDTH FROM CENTER	6' 6"	P	MAXIMUM LENGTH FROM CENTER TO BOOM SUPPORT	16' 6-1/2"
E	LENGTH OF BOOM	40' 0"	Q	MAXIMUM SWING RADU RADIUS	11' 6-1/2"
F	MINIMUM SWING CLEARANCE	5' 0"	R	MAXIMUM HEIGHT OVERALL (LESS CAB GUARD)	11' 10"
G	WIDTH OF CRAWER TREAD	23"	S	MINIMUM GROUND CLEARANCE	18-1/2"
H	OVERALL TRACK WIDTH	11' 2"	T	MAXIMUM LENGTH OF BEARING AREA	13' 9"
J	OVERALL MACHINE WIDTH	14' 1-1/4"	U	OVERALL LENGTH OF CARRIER	20' 0"
K	MAXIMUM HEIGHT OF MACHINE	14' 10-1/2"	V	OVERALL LENGTH WITH BOOM LOWERED	53' 1"



LINE SPEEDS AND PULLS

DRUMS	HAULBACK	MAIN	FRONT	STRAW	GUYLINE
MAXIMUM LINE PULLS (LBS)	28"x37"x33" L <sub>g</sub>	30"x38"x38" L <sub>g</sub>	30"x38"x30" L <sub>g</sub>	10"x34"x7 7/8" L <sub>g</sub>	9"x14"x13" L <sub>g</sub>
FULL	14,700	48,700	24,800	5,600	3,060
EMPTY	17,000	52,600	26,600	13,400	4,000
MAXIMUM LINE SPEEDS (FPM)					
FULL	1,502	1,350	1,350	4,050	164
EMPTY	1,309	1,250	1,250	1,680	125

RUNNING SKYLINE CABLE RECOMMENDATIONS

DRUMS	HAULBACK	MAIN	FRONT	STRAW	GUYLINE
MAX. RECOMMENDED CABLE LENGTH AND DIAMETER	2,250'-3/4" 3,250'-5/8"	1,200'-5/8" 1,800'-1/2"	1,200'-3/8" 1,800'-1/2"	5400'-5/16" 3680'-3/8"	270'-3/4"
MAXIMUM RECOMMENDED YARDING DISTANCE	5/8" MAINLINES, 3/4" HAULBACK - 1,100' 1/2" MAINLINES, 5/8" HAULBACK - 1,600'				

HIGHLEAD CABLE RECOMMENDATIONS

DRUMS	HAULBACK	MAIN	FRONT	STRAW	GUYLINE
MAX. RECOMMENDED CABLE LENGTH AND DIAMETER	3,250'-5/8"	1,050'-3/4"	—	5400'-5/16" 3680'-3/8"	270'-3/4"
MAXIMUM RECOMMENDED YARDING DISTANCES	3/4" MAINLINE, 5/8" HAULBACK - 1,000'				



WASHINGTON IRON WORKS  
Division of FORMAC INTERNATIONAL, INC.  
1500 Sixth Avenue South • Seattle, Washington 98134

POWER UNIT	— CUMMINS - V555 — 197 H.P. @ 2600 GOVERNED RPM	
CONVERTER TRANSMISSION	— TWIN DISC 1300 SERIES SINGLE STAGE TORQUE CONVERTER AND 441100 POWER SHIFT TRANSMISSION WITH 4 SPEED FORWARD AND 4 SPEED REVERSE.	
DRUMS	— HAULBACK EQUIPPED WITH INFINITE RATIO INTERLOCK. HYDRAULICALLY CONTROLLED. MAIN AND FRONT DRUMS EQUIPPED WITH MECHANICAL INTERLOCK, INDEPENDENT CONTROL OF FRONT DRUM, IDENTICAL DIMENSIONS.	
BRAKES AND CLUTCHES	— DRUMS EQUIPPED WITH AIR-ACTIVATED PLATE DISCONNECT CLUTCHES. BRAKES ARE AIR RELEASED, SPRING APPLIED EXTERNAL CONTRACTING BAND TYPE USED FOR HOLDING RIGGING.	
SWING ASSEMBLY	— HYDRAULIC POWERED. EQUIPPED WITH AIR-RELEASED, SPRING APPLIED BRAKE AND POSITIVE HOUSE LOCK.	
TRAVEL	— MECHANICAL DOWN DRIVE FROM MACHINERY DECK UNDER-CARRIAGE. DIFFERENTIAL STEERING.	
OPERATOR'S CAB	— HEAVY STEEL PLATE, GLASS ENCLOSED, ALL CONTROLS CONVENIENTLY LOCATED, COMPLETE WITH GUARDING, (OPTIONAL INSULATION AND/OR AIR CONDITIONING).	
BOOM & A-FRAME	— EXCLUSIVE INTEGRAL DESIGN, EQUIPPED WITH STANDARD RIGGING. HYDRAULIC RAISING AND LOWERING ASSEMBLY (OPTIONAL).	
GUYLINE DRUMS	— HYDRAULIC NON-FREEWHEELING DRUMS PER STATE REQMTS. DRUM CAPACITY = 150' - 3/4".	
TANK CARRIER	— MAX. TRAVEL SPEED	9 MPH
	MAX. GRADABILITY	25%
	FLOTATION (GROUND PRESSURE)	12 PSI
	TURNING RADIUS	30 FT
	TURNABLE SWING SPEED	3.4 RPM
WEIGHTS	— PLATFORM	32,000 LBS.
	BOOM	4,800
	"A" FRAME	2,400
	CARRIER	42,000 LBS.
	TOTAL	81,200 LBS.
	WEIGHTS OF LINES, FUEL, ETC.	
	WORKING WEIGHT	7,300
		88,500 LBS.

DEALER

ALL SPECIFICATIONS SUBJECT TO CHANGE

Printed in U.S.A.



WHEELER  
EQUIPMENT LTD.